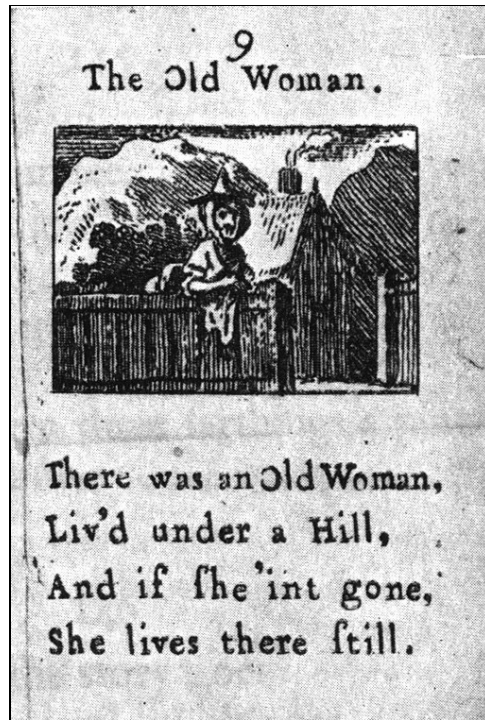




Encoding primary sources



The poem 'The Old Woman' first appeared in *Tommy Thumb's Pretty Songbook*, the earliest known book of nursery rhymes, printed ca. 1744. Simple TEI mark-up would look like this:

```
<text>
<body>
<div>
<head>The Old Woman.</head>
<lg>
<l>There was an Old Woman,</l>
<l>Liv'd under a Hill,</l>
<l>And if she 'int gone,</l>
<l>She lives there still.</l>
</lg>
</div>
</body>
</text>
```